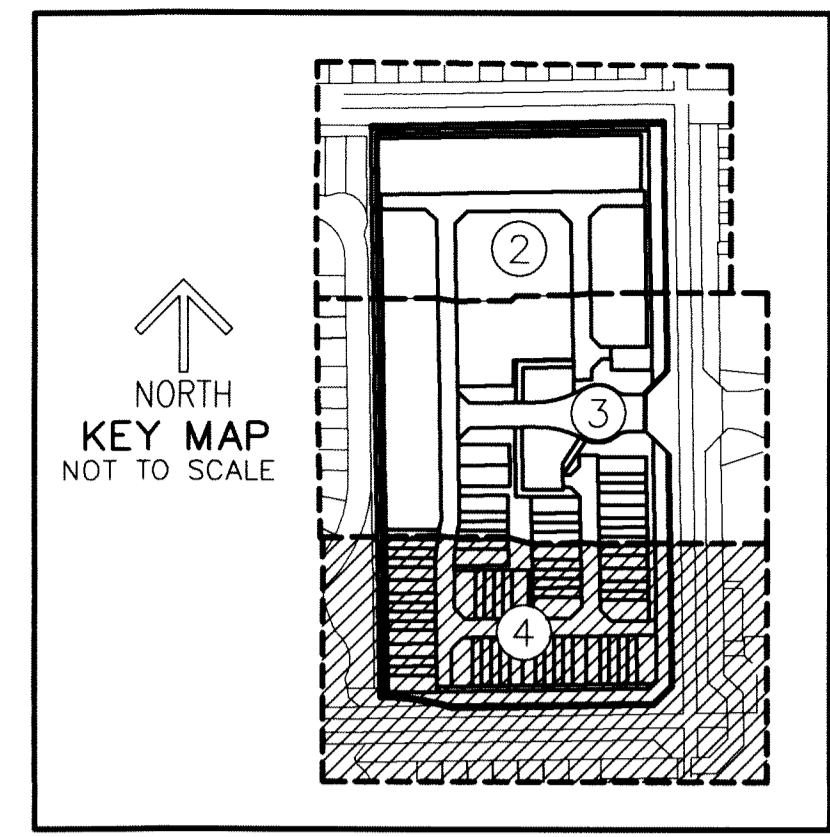
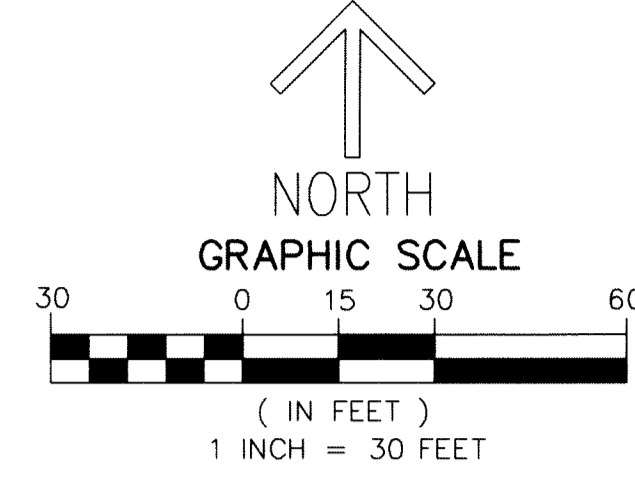


# FIELDS AT GULFSTREAM POLO PUD - PLAT SIX

A PLANNED UNIT DEVELOPMENT  
 BEING A REPLAT OF A PORTION OF TRACTS 37 AND 44, BLOCK 28, PALM BEACH FARMS CO. PLAT NO. 3,  
 AS RECORDED IN PLAT BOOK 2, PAGES 45 THROUGH 54 OF THE PUBLIC RECORDS OF PALM BEACH COUNTY, FLORIDA,  
 LYING IN SECTION 29, TOWNSHIP 44 SOUTH, RANGE 42 EAST, PALM BEACH COUNTY, FLORIDA

THIS INSTRUMENT PREPARED BY  
 DAVID P. LINDLEY

OF  
**CAULFIELD and WHEELER, INC.**  
 SURVEYORS - ENGINEERS - PLANNERS  
 7900 GLADES ROAD, SUITE 100  
 BOCA RATON, FLORIDA 33434 - (561)392-1991  
 CERTIFICATE OF AUTHORIZATION NO. LB3591

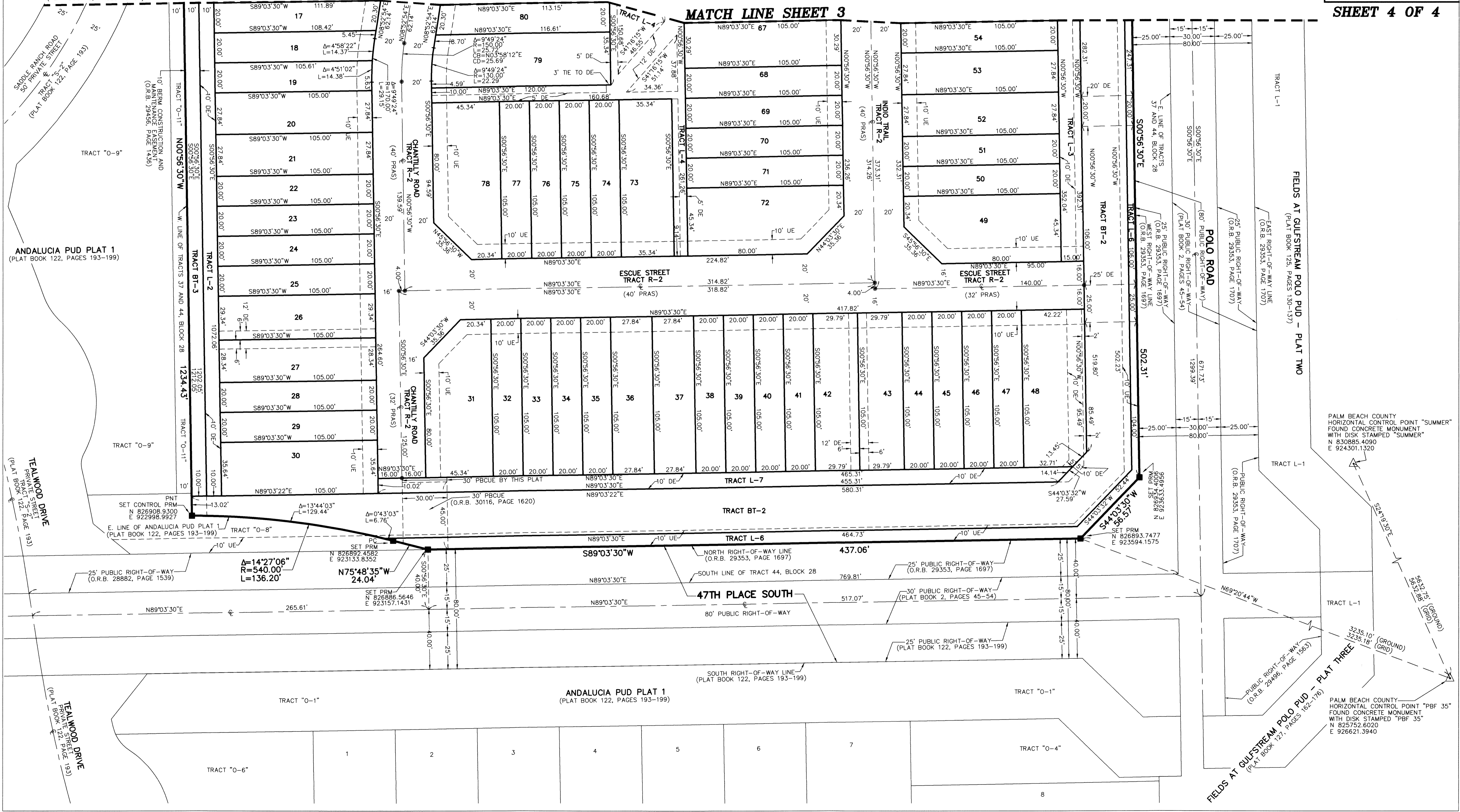


189

SHEET 4 OF 4

- LEGEND/ABBREVIATIONS**
- C - CENTERLINE
  - Δ - DELTA (CENTRAL ANGLE)
  - (C) - CALCULATED
  - CB - CHORD BEARING
  - CD - CHORD DISTANCE
  - DE - DRAINAGE EASEMENT
  - E - EASTING (WHEN USED WITH COORDINATES)
  - L - ARC LENGTH
  - LB - LICENSED BUSINESS
  - L.W.D.D. - LAKE WORTH DRAINAGE DISTRICT
  - N - NORTHING (WHEN USED WITH COORDINATES)
  - NAD - NORTH AMERICAN DATUM
  - MOHE - MAINTENANCE AND OVERHANG EASEMENT
  - O.R.B. - OFFICIAL RECORD BOOK
  - PBCUE - PALM BEACH COUNTY UTILITY EASEMENT
  - PC - POINT OF CURVATURE
  - PNT - POINT OF NON TANGENCY
  - PT - POINT OF TANGENCY
  - PRAS - PRIVATE RESIDENTIAL ACCESS STREET
  - PRAS - PRIVATE RESIDENTIAL ACCESS STREET
  - PUD - PLANNED UNIT DEVELOPMENT
  - R - RADIUS
  - UE - UTILITY EASEMENT
  - ◀ - INDICATES "ZERO" SIDE OF LOT LINE
  - - DENOTES SET PERMANENT REFERENCE MONUMENT  
 4" x 4" x 2" CONCRETE MONUMENT WITH ALUMINUM DISK STAMPED "C&W FRM LB3591"
  - - DENOTES SET PERMANENT CONTROL POINT  
 NAIL AND METAL DISK STAMPED "PCP LB3591"
  - (P) - PALM BEACH FARMS CO. PLAT NO. 3 (PLAT BOOK 2, PAGES 45-54)

- NOTES**
- COORDINATES, BEARINGS AND DISTANCES**
- COORDINATES SHOWN ARE GRID  
 DATUM = NAD 83 (90 ADJUSTMENT)  
 ZONE = FLORIDA EAST  
 LINEAR UNIT = US SURVEY FEET  
 COORDINATE SYSTEM 1983 STATE PLANE  
 TRANSVERSE MERCATOR PROJECTION  
 ALL DISTANCES ARE GROUND, UNLESS OTHERWISE NOTED  
 SCALE FACTOR = 1.0000236  
 GROUND DISTANCE X SCALE FACTOR = GRID DISTANCE  
 BEARINGS AS SHOWN HEREON ARE GRID DATUM,  
 NAD 83 (90 ADJUSTMENT), FLORIDA EAST ZONE.



PALM BEACH COUNTY HORIZONTAL CONTROL POINT "SUMMER" FOUND CONCRETE MONUMENT WITH DISK STAMPED "SUMMER" N 830885.4091 E 924301.1320

PALM BEACH COUNTY HORIZONTAL CONTROL POINT "PBF 35" FOUND CONCRETE MONUMENT WITH DISK STAMPED "PBF 35" N 825752.6020 E 926621.3940